

Watchlog Wireless Temperature Sensor

HT-WLT



- Powered by 2x AA batteries with automatic sleep mode when not in use for up to 5 years battery life
- Two standard temperature ranges from -50...100°C and -50...200°C
- Transmit wireless temperature readings up to 1.6km distance and up to 10 times a second
- Direct or remote transmitter mounting options

Plant Engineering
Industrial machinery
Agricultural machinery

Hydraulics
Automotive

The HT-WLT range of wireless temperature sensors allow temperature readings to be transmitted wirelessly up to 1.6km with no need for external power.

HT-WLT Watchlog Wireless Temperature Sensor

The HT-WLT wireless temperature sensors are designed for use in applications where external power is not available or where cabled sensors are not suitable such as in rotating or moving machinery.

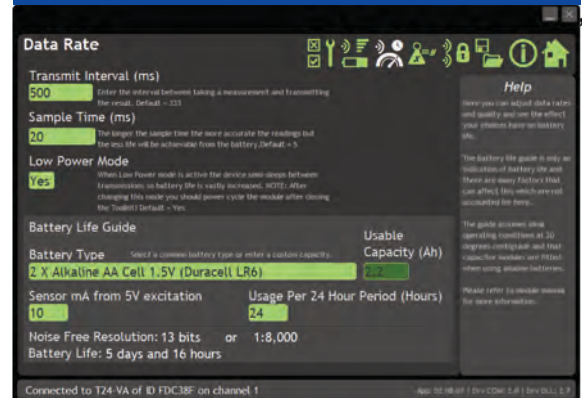
The high-accuracy, low-noise measurement electronics deliver high-resolution, low-drift results. The readings can be transmitted at rates of up to 10 per second all the way up to 1 per minute.

The wireless sensor transmitter module provides exceptional performance in the field with a potential battery life of up to 5 years, by 'powering between transmissions or 'powering off' completely.

Please contact us to discuss your requirements and receive an estimated battery life calculation.

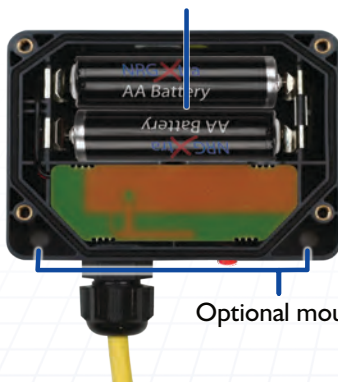
The wireless sensor transmitter modules come configured as standard with a 10ms sample every 1 second which can be adjusted by customers by the free toolkit software or can be supplied pre-programmed as required.

Sensors can be configured with the included software toolkit



HT-WLT Assembly Overview

Powered by 2 alkaline 'AA' cell batteries



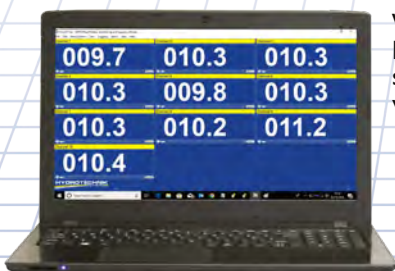
Optional mounting points

Power LED



Environmentally sealed to IP67

Watchlog display & logging software is supplied free of charge with all sensors.



Watchlog transmitters can be provided as compact fixed units or with cables which allow for remote placement of the transmitter.

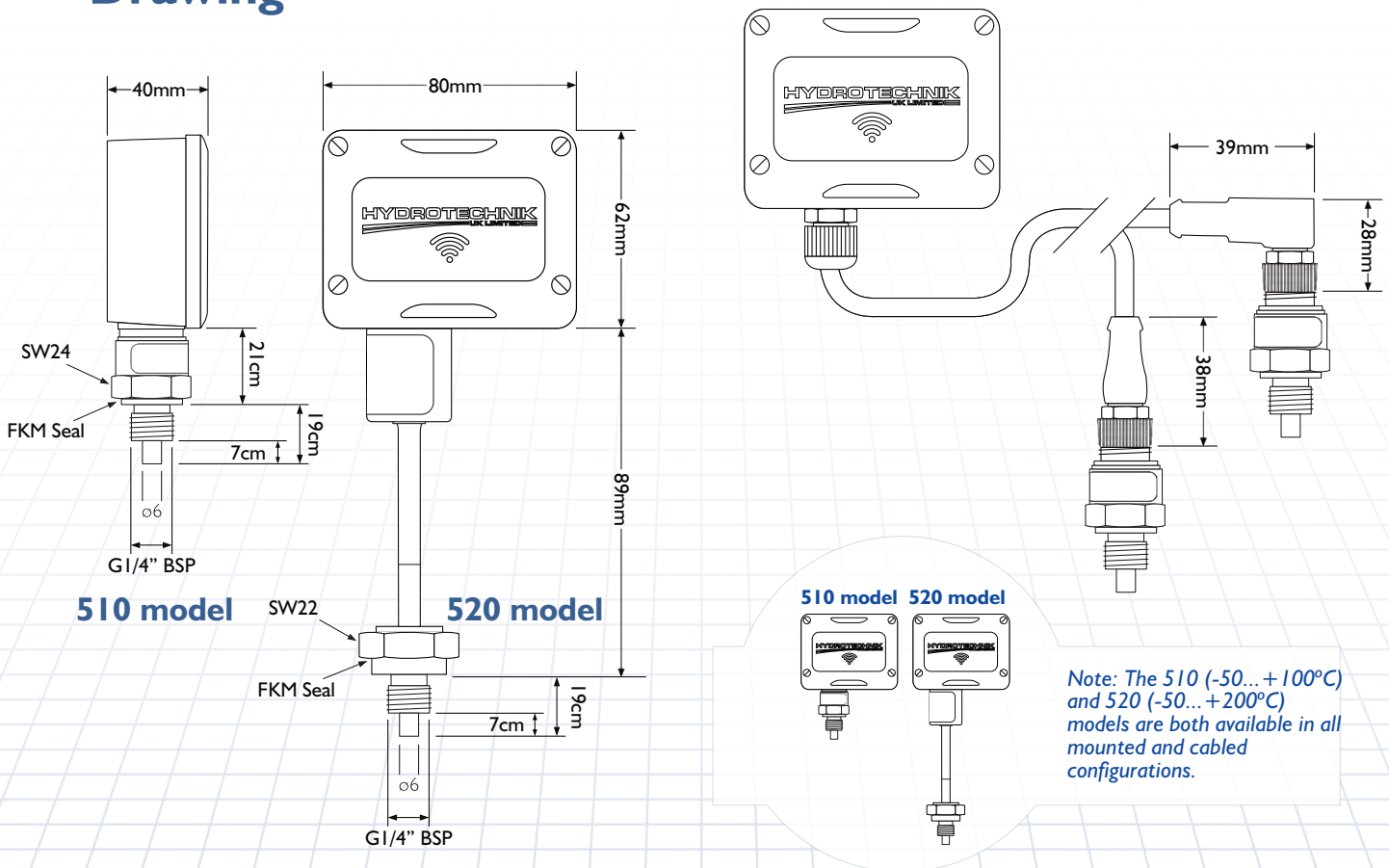
HT-WLT Watchlog Wireless Temperature Sensor

Technical Specifications

Specification	Detail
Wireless range (maximum)	800 meters
Wireless range (maximum with HT-AR extender)	1600 meters
Transmission rate	200ms...60s
Power supply	3 Vdc (2xAA batteries)
Battery life	Up to 5 years
Wireless transmitter enclosure operating temperature	-20...55°C
Temperature sensor media temperature	-50...+100°C or -50...+200°C
Maximum pressure	400 bar
Pressure sensor ambient temperature	125°C*
Measuring element	PT100, Class B, 4-wire
Temperature sensor wetted parts	SS316L
IP rating	IP67

* Depending on version

Drawing



HT-WLT Watchlog Wireless Temperature Sensor

Order codes

HT-WLT - **XXX** - **Y** **Z.Z**

Replace **XXX** with below code for the required specification
510 = -50...100°C (400 bar max)
520 = -50...200°C (400 bar max)

630 bar version available on request

Replace **Y** with below code for the required sensor connector type
A = 90° angled
S = Straight

Leave blank if no cable required

Replace **Z.Z** with below code for cable length

1.5 = 1.5 meters
3.0 = 3.0 meters
5.0 = 5.0 meters
10.0 = 10.0 meters

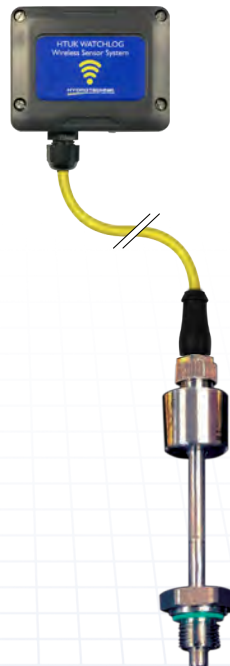
Other lengths available on request

Ordering examples



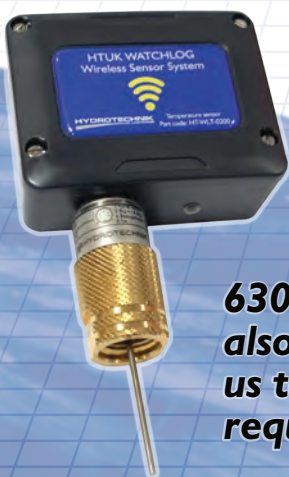
HT-WLT-510

-50...100°C (400 bar max) temperature sensor directly mounted to Watchlog transmitter.



HT-WLT-520-S3.0

-50...200°C (400 bar max) temperature sensor cable mounted to Watchlog transmitter using a 3.0m cable and a straight connector.

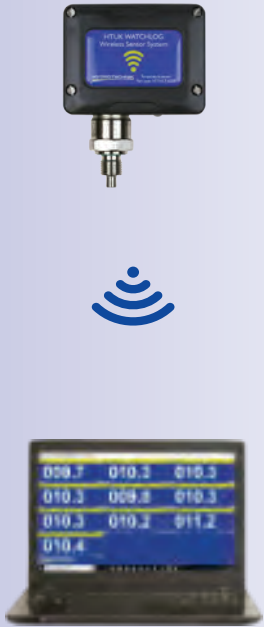


630 bar version also available. Call us to discuss your requirements.

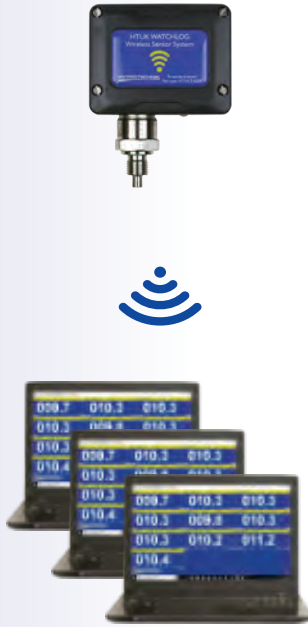


Configuration options

One-to-One



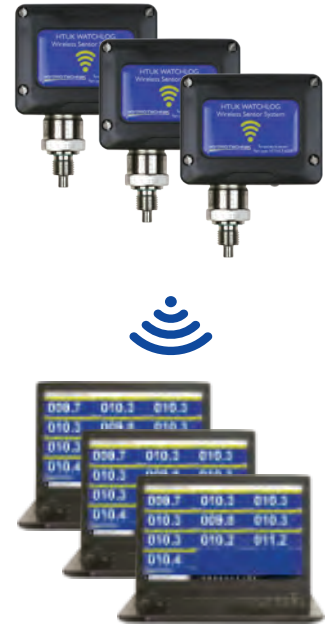
One-to-Many



Many-to-One



Many-to-Many



Other Watchlog products available



HT-WLP wireless pressure sensors



HT-WLF wireless flow meters



HT-AR signal repeaters
HT-PP ISPI solar power panel and battery pack.



HT-BSx series USB signal receiving base stations.



Watchlog display and data logging software